

## Updates in the Sophas system – version 2.5

### Introduction:

One of the key activities of the JL Soft company is continuous improvement of the *Sophas* system to reflect the most recent trends and needs in the actuarial practice.

This short memo presents main updates included in the version 2.5 (especially comparing to the latest release of version 2.1).

### New functionalities of Sophas 2.5

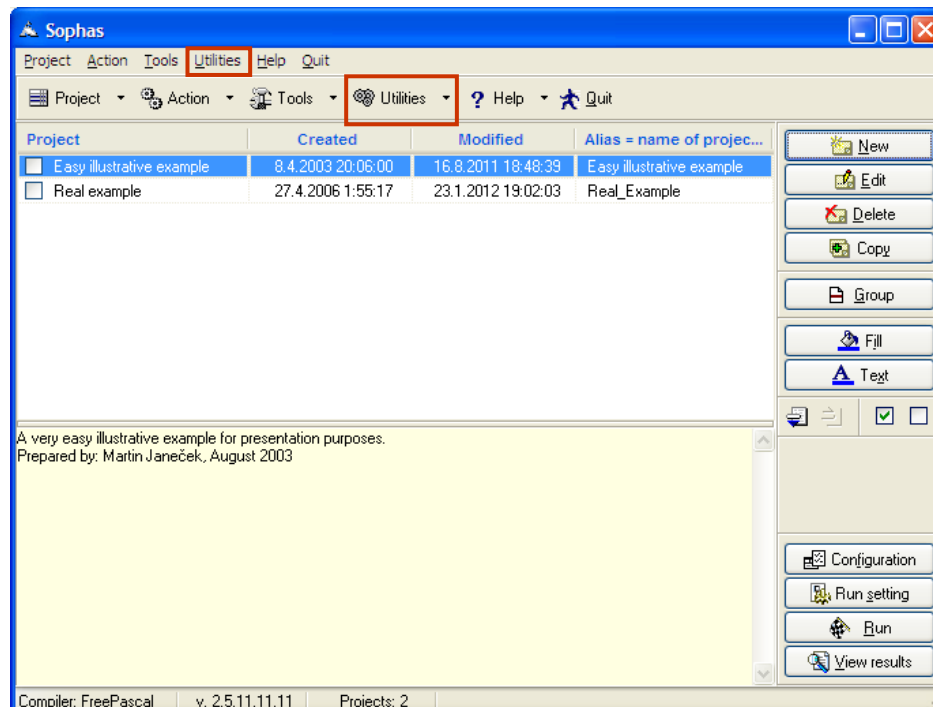
#### 1. Working with \*.dbf and \*.csv files

This option enables you to work with the \*.dbf and \*.csv files.

Especially the import of \*.csv files into \*.dbf format is a very useful functionality as all the tables which are used in the *Sophas* environment are to be of \*.dbf format, while the tables may sometimes be externally prepared in tools which do not support \*.dbf format. Such tools however often support \*.csv format.

In such a situation you can use this *Sophas* facility to convert \*.csv file into \*.dbf format.

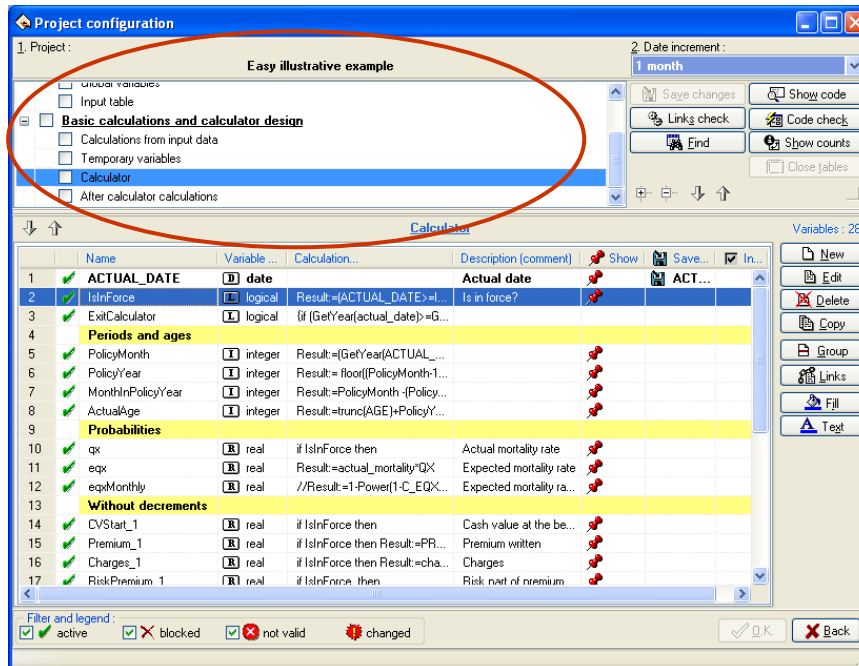
You can use the newly available <Utilities> option in the main menu.



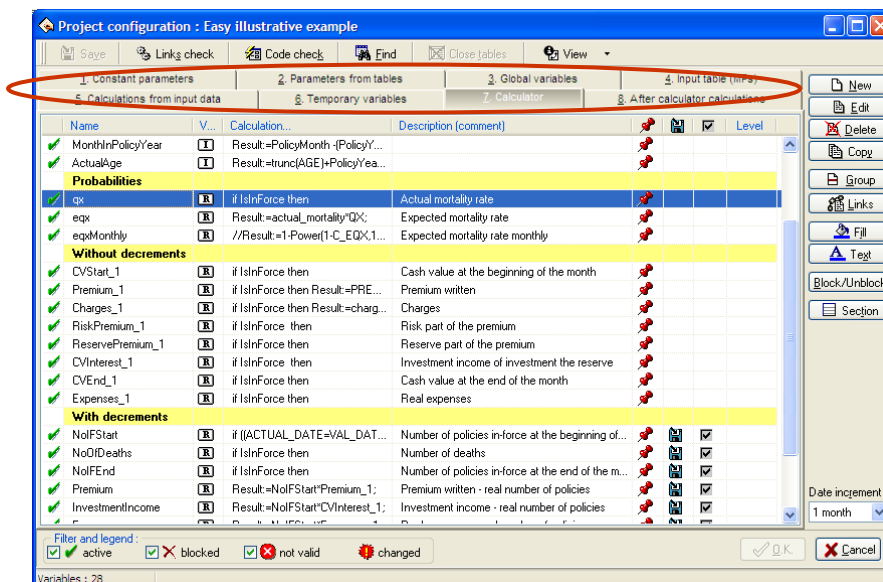
## 2. Enlargement of the working space in the project configuration

Project configuration window structure has changed from the original one, where the upper part of the window contained lines representing project logical parts, into the new one, where these logical parts are displayed on several pages using 'PageControl' object.

Original structure:



New structure in Sophas 2.5



This adjustment makes the lower part, which contains the variables definitions, to be larger what **positively contributes to the clearer configuration arrangement.**

### 3. Multilevel calculator – sections in the Calculator part

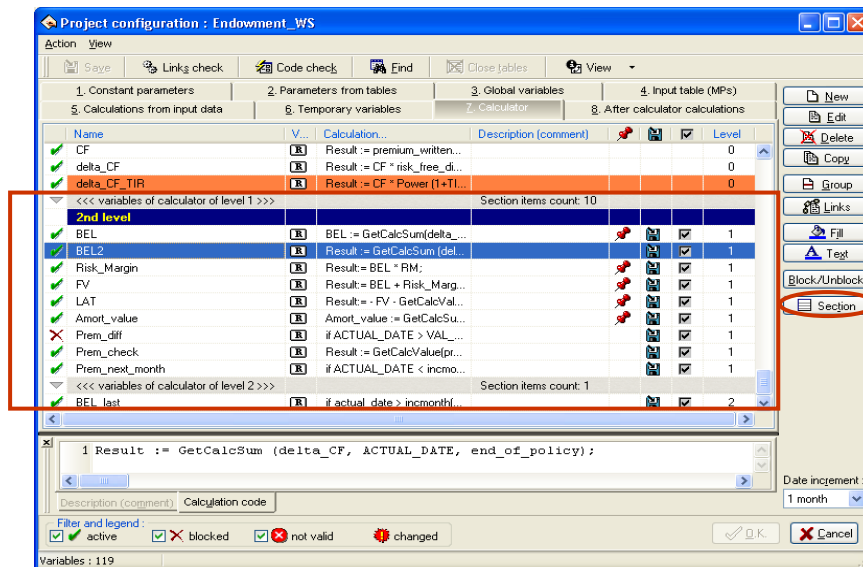
Sophas 2.5 allows defining more “sections” in the Calculator part, last versions offered only one.

Each section builds its own projection (ACTUAL\_DATE from VAL\_DATE to FINAL\_DATE) of defined variables and for a definition of a variable in the current section variables defined in lower level sections may be used (variables related to a specified time).

#### For example:

You can use this feature when it is required to project present values of remaining cash flows (e.g. premium, expenses, claims, total cash flow, etc.).

In such a case the variables as premium, expenses, claims, total cash flow, etc. may be defined in lower level (e.g. the first) section of the Calculator and then, in the higher level section, the present values of these variables as at the actual date may be calculated.



### Conclusion:

Sophas 2.5 contains the above-mentioned and many other updates which mostly improve the system handling straightforwardness and its flexibility reflecting especially the recent development in IFRS and Solvency II projects.

We will be happy to discuss with you all the improvements and their practical applications personally.

If you are interested in such a meeting, contact us at [sophas@sophas.eu](mailto:sophas@sophas.eu).

With kind regards,



Martin Janeček  
JL Soft Managing Director